

HARRY CHARLES

Property Specialists



Forester House, Watford, WD18 0QD

£1,225 Per month

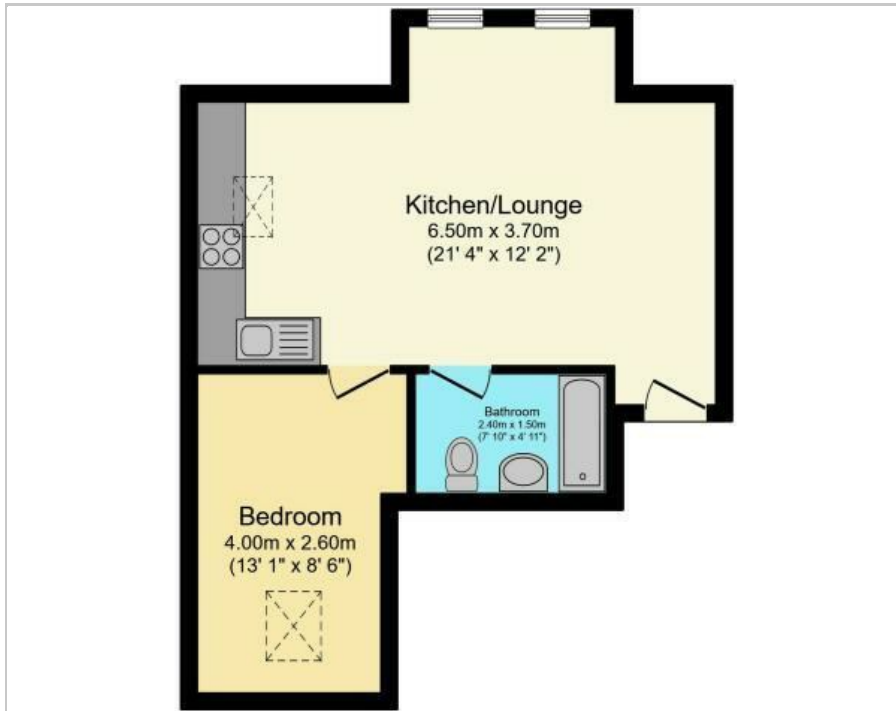


**** PART FURNISHED TOP FLOOR APARTMENT - OPEN PLAN LOUNGE/KITCHEN - DOUBLE BEDROOM - FAMILY BATHROOM - GCH TO RADIATORS - COUNCIL TAX BAND C - TOWN CENTRE LOCATION - AVAILABLE 9th MAY **** We are delighted to offer for Let on a part furnished basis this modern top floor apartment situated close to Watford town centre. The property is approximately 8 years old and benefits from a communal courtyard with cycle parking to the rear. The property is available and we would ask that you contact us without delay to arrange an early appointment to view. Please note that this property comes with No Parking.

- Modern Top Floor Apartment
- Double Bedroom
- Council Tax Band C
- Town Centre Location
- Available 9th May
- Open Plan Lounge/Kitchen
- Family Bathroom
- Communal Courtyard To The Rear
- NO PARKING



Floor Plan



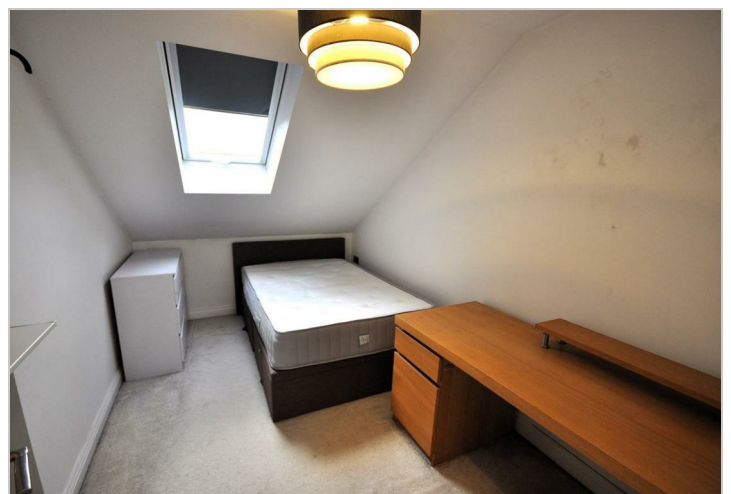
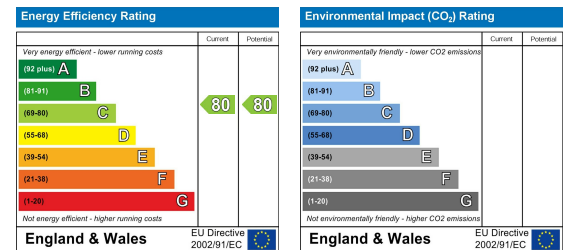
Total floor area 38.6 sq.m. (415 sq.ft.) approx

This floor plan is for illustrative purposes only. It is not drawn to scale. Any measurements, floor areas (including any total floor area), openings and orientation are approximate. No details are guaranteed, they cannot be relied upon for any purpose and they do not form part of any agreement. No liability is taken for any error, omission or misstatement. A party must rely upon its own inspection(s). Plan produced for Purplebricks. Powered by www.focalagent.com

Area Map



Energy Efficiency Graph



These particulars, whilst believed to be accurate are set out as a general outline only for guidance and do not constitute any part of an offer or contract. Intending purchasers should not rely on them as statements of representation of fact, but must satisfy themselves by inspection or otherwise as to their accuracy. No person in this firm's employment has the authority to make or give any representation or warranty in respect of the property.